



Agenda Item 7
Nevada Conservation Credit System
Credit & Debit Project Updates

Kelly McGowan
Sagebrush Ecosystem Technical Team



Credit Projects Having Transferred Credits

Credit Project	Acres	Credits Transferred & Debit Project Offset	Credits Available For Sale or Offset	County(s)
Tumbling JR Ranch (Kinross Gold)	9,750	2,514; Bald Mountain Mine Phase 1	1,663	White Pine, Elko
West IL Ranch (Newmont Mining)	8,058	243; Greater Phoenix Mine	Under revision due to wildfire	Elko
Totals	17,808	2,757	1,663	



Remaining Credit Projects With Credits Available

Credit Project	Acres	Credits Available For Sale or Offset	County(s)
Cottonwood Ranch	1,008	711	Elko
Crawford Cattle - Snowstorms	10,531	1,898	Humboldt, Elko
Crawford Cattle - Sonoma	1,498	467	Humboldt
Johns Ranch	1,073	164	Elko
RDD	1,094	740	Humboldt
Totals	15,204	3,980	



Credit Projects with Credits Not Yet Available

Credit Project	Acres	Credits Anticipated & Status in CCS	County(s)
Coleman Valley Ranch	1,137	394; Mgmt. Plan needs finalization.	Washoe
Adobe Peak (Kinross Gold)	10,901	3,555; Mgmt. Plan under development.	Elko
Eureka Livestock	1,623	1,737; Mgmt. Plan under development.	Eureka
Estill Ranch	1,671	NA; HQT results assessment ongoing.	Washoe
Cave Valley Ranch	1,769	NA; HQT results assessment ongoing.	Lincoln
Heguy Ranch	6,490	NA; Final HQT results not yet submitted.	Elko
Squaw Valley Ranch (Barrick Gold)	198	NA; Final HQT results not yet submitted.	Elko
Totals	23,789	5,686 Confirmed	



Debit Projects Mitigated in the CCS

Debit Project	Direct Impact Acres	Indirect Impact Acres	Debits	Status in CCS	Status in NEPA	Planning to Use CCS? If not, why?	County(s)
Bald Mountain Mine - Phase 1 (Kinross Gold)	2,521	135,959 (Phases 1 & 2)	2,514	Mitigated with credits from Tumbling JR Ranch in 2017.	ROD signed 8/2016.	CCS was used.	White Pine
Greater Phoenix Mine - Phase 1 (Newmont Mining)	513	27,998	211	Mitigated with credits from West IL Ranch in 2018.	ROD signed 9/2018.	CCS was used.	Lander
Totals	3,034	163,957	2,725				



Debit Projects with Confirmed Debit Calculations

Debit Project	Direct Impact Acres	Indirect Project Acres	Debits	Status in CCS	Status in NEPA	Planning to Use CCS? If not, why?	County(s)
Gold Bar (McEwen Mining)	662	67,678	6,814	Debits confirmed by SETT. Not yet mitigated.	ROD signed 11/2017.	Do not currently plan to use the CCS.	Eureka
Gold Rock (GRP/Fiore Gold)	1,799	34,571	2,985	Debits confirmed by SETT. Not yet mitigated.	ROD signed 9/2018.	Do not currently plan to use the CCS due to uncertainty over local availability & cost of credits.	White Pine
Bald Mountain Mine - Phase 2 (Kinross Gold)	3,213	135,959 (Phases 1 & 2)	2,737	Debits confirmed by SETT. Not yet mitigated.	ROD signed 8/2016.	Yes, when ready to mitigate next phase.	White Pine
Greater Phoenix Mine - Philadelphia Canyon (Newmont Mining)	203	12,834	4	Debits confirmed by SETT. Not yet mitigated.	EA published 5/2015.	Yes, they plan to use the CCS.	Lander
Twin Creeks Mine - Sage Tailings (Newmont Mining)	0	5,106	33	Debits confirmed by SETT. Not yet mitigated.	Final EA anticipated by end of 2018.	Yes, they plan to use the CCS.	Humboldt
Rossi Barite Expansion (Haliburton)	1,164	43,108	437	Debits confirmed by SETT. Not yet mitigated.	DEIS released 9/2018.	Plans to mitigate are not clear.	Elko
Marigold Expansion (Marigold Mining)	0	19,980	0	Debits confirmed by SETT. No mitigation required in CCS.	DEIS likely 10/2018 with ROD expected 4/2019.	No mitigation required in CCS.	Humboldt, Lander
Coeur Rochester Mine Expansion (Coeur Rochester, Inc.)	2,567	39,905	602	Debits confirmed by SETT. Not yet mitigated.	Approved Plan of Operations 9/2017. If EIS process begins soon. FEIS likely late-2019.	Weighing HQT results & considering using the CCS.	Pershing
Totals	9,608	359,141	13,612				



Debit Projects with Debits Not Yet Calculated

Debit Project	Direct Impact Acres	Indirect Impact Acres	Debits	Status in CCS	Status in NEPA	Planning to Use CCS? If not, why?	County(s)
Long Canyon Mine - Phase 2 (Newmont Mining)	1,570	82,568	-	HQT results not yet submitted to SETT.	Plan of Operations approval likely in 10/2018. DEIS expected 10/2019 & ROD 7/2020.	Yes, they plan to use the CCS.	Elko
Lone Tree Mine – Buffalo Mountain (Newmont Mining)	283	10,717	-	HQT results not yet submitted to SETT.	Completing baseline studies, EA likely completed by late 2019 or early 2020.	Yes, they plan to use the CCS.	Humboldt
Lithium Nevada Mine (Lithium Nevada)	-	-	-	HQT results not yet submitted to SETT.	Plan of Operations submittal expected 9/2019, with NEPA to start 12/2019 & ROD expected 11/2020.	Considering options & have not yet made plans to mitigate.	Humboldt
Totals	1,853	93,285	-				



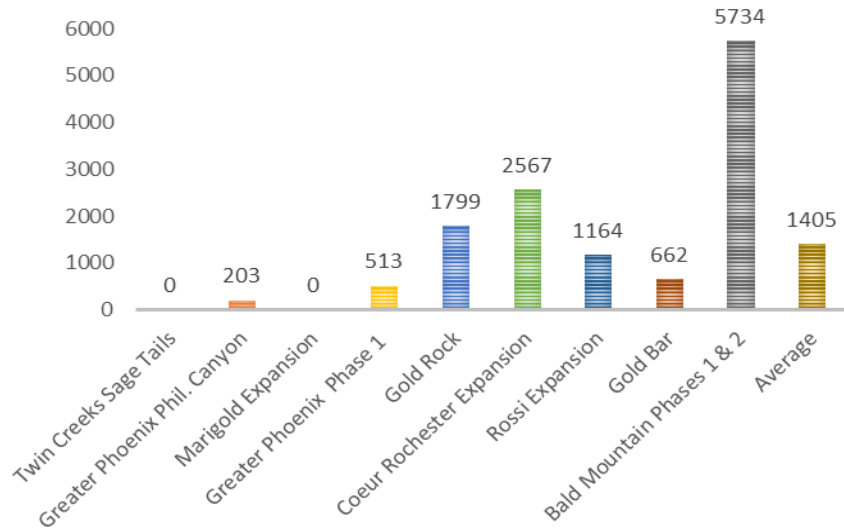
Variation in Debit Results in Review

- Debit calculations depend on the project and its location.
 - The project:
 - Is it new or an expansion?
 - Are infrastructure requirements complex or limited?
 - Is the project footprint compact or sprawling?
 - Project location:
 - Is the location directly in PHMA, GHMA, or OHMA or only indirectly impacting GRSG HMAs?
 - Are HMAs close in proximity or distant to the project?
 - Is the project surrounded by HMA or is HMA less widespread in its vicinity?
 - Is anthropogenic disturbance already abundant near the project?
 - Are surrounding HMA areas predominantly high quality GRSG habitat? Burned areas? Cheat grass?
 - Does high quality late-brood rearing habitat occur in relatively close proximity to the project?
 - Are leks in close proximity?

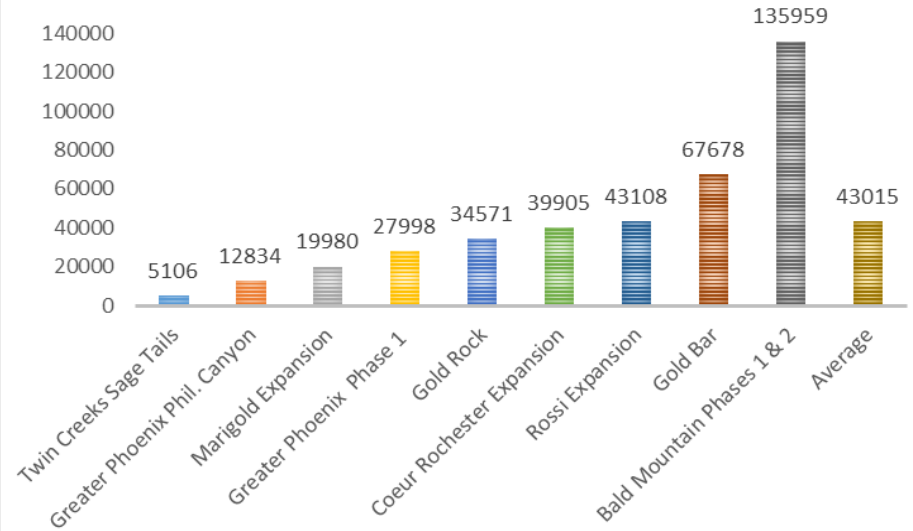


Debit Project Variation

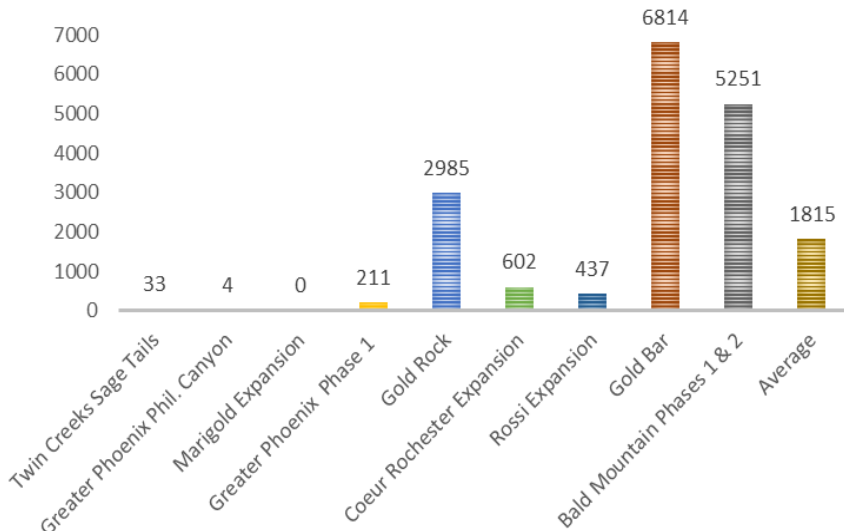
DIRECT IMPACT ACRES



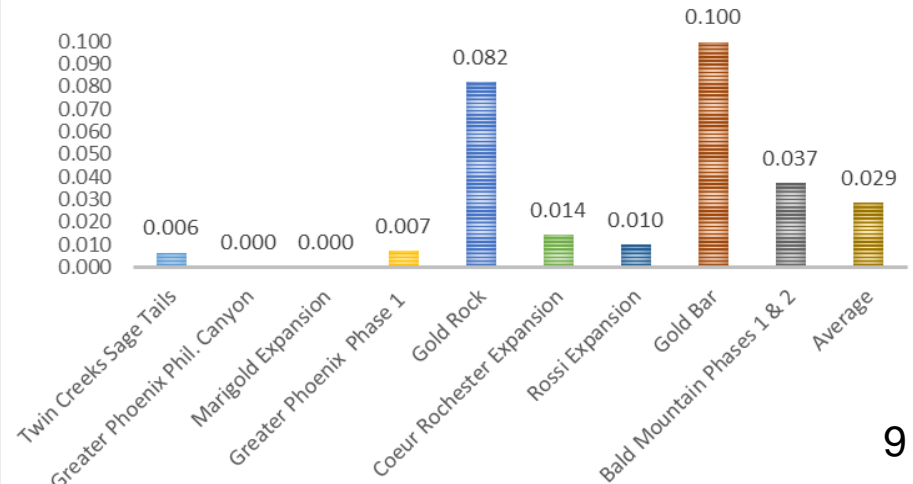
INDIRECT IMPACT ACRES



DEBITS

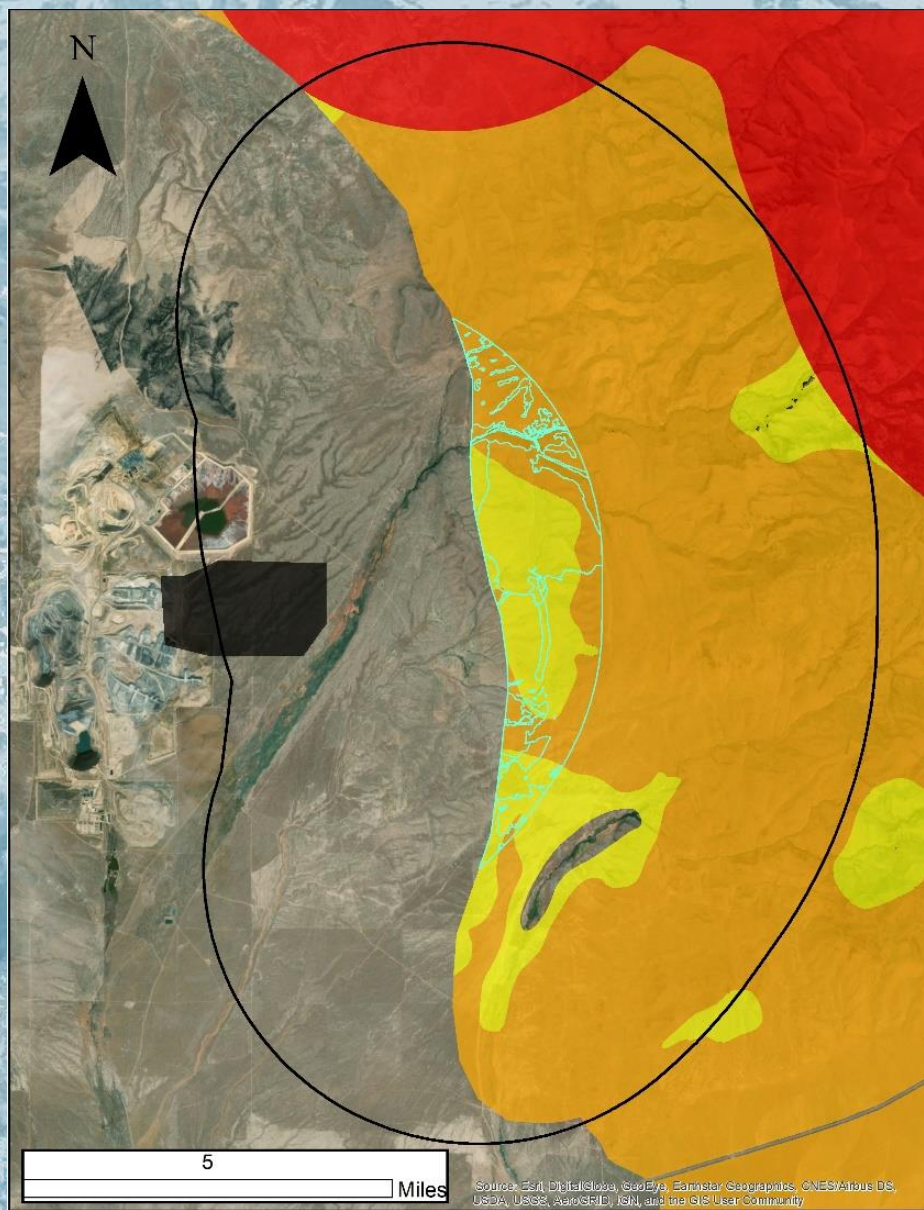


DEBITS/CUMULATIVE DISTURBANCE ACRES





Debit Project Variation – Twin Creeks Sage Tails



Legend

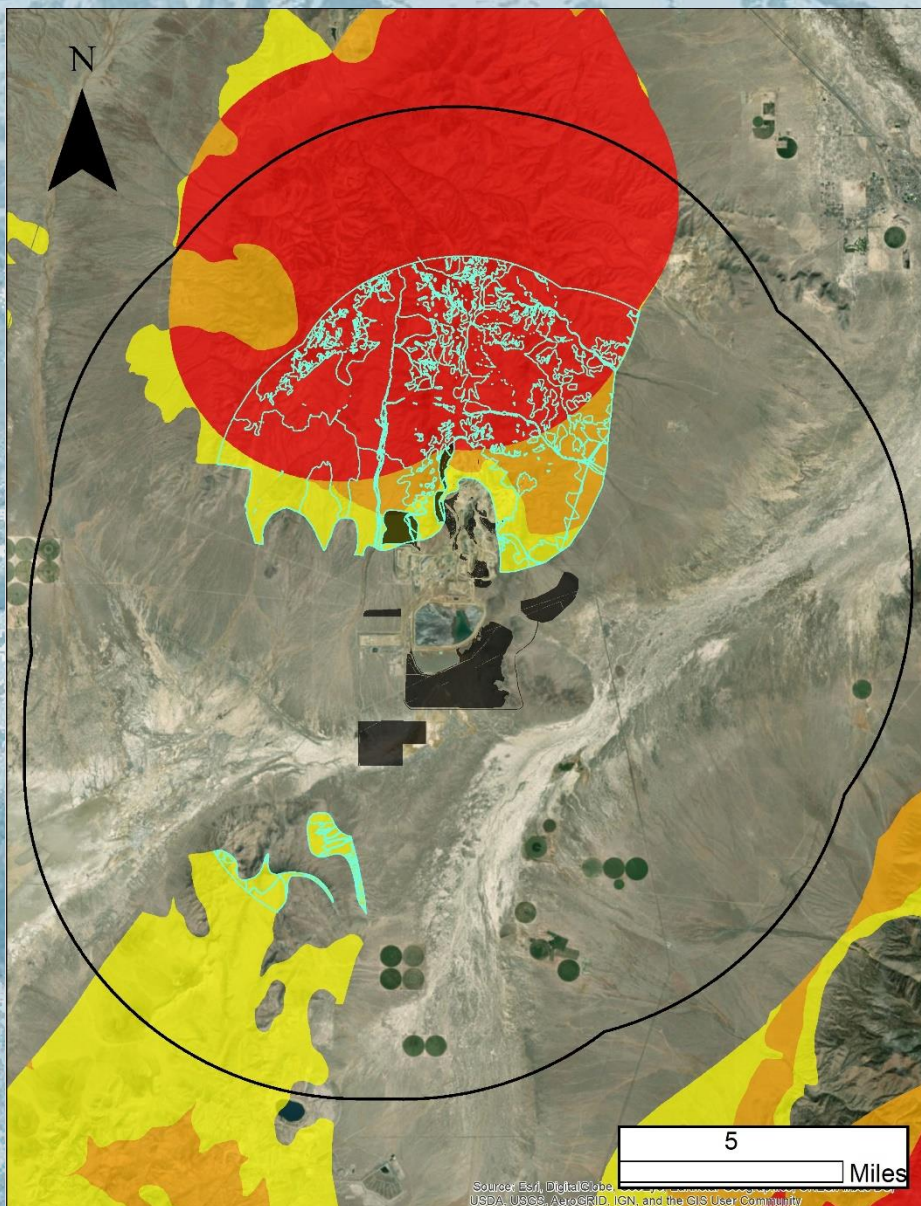
- Proposed_Surface_Disturbance
- Map_Units
- Analysis_Area_6000m
- PHMA
- GHMA
- OHMA

	Twin Creeks Sage Tails	Average Among Projects
Direct Impact Acres	0	1405
Indirect Impact Acres	5106	43015
Cumulative Acres	5106	44420
Debits	33	1815
Debits/Cumulative Disturbance Acres	0.006	0.029

Source: Esri, DigitalGlobe, GeoEye, Earthstar Geographics, CNES/Airbus DS, USDA, USGS, AeroGRID, IGN, and the GIS User Community



Debit Project Variation – Greater Phoenix Phase 1

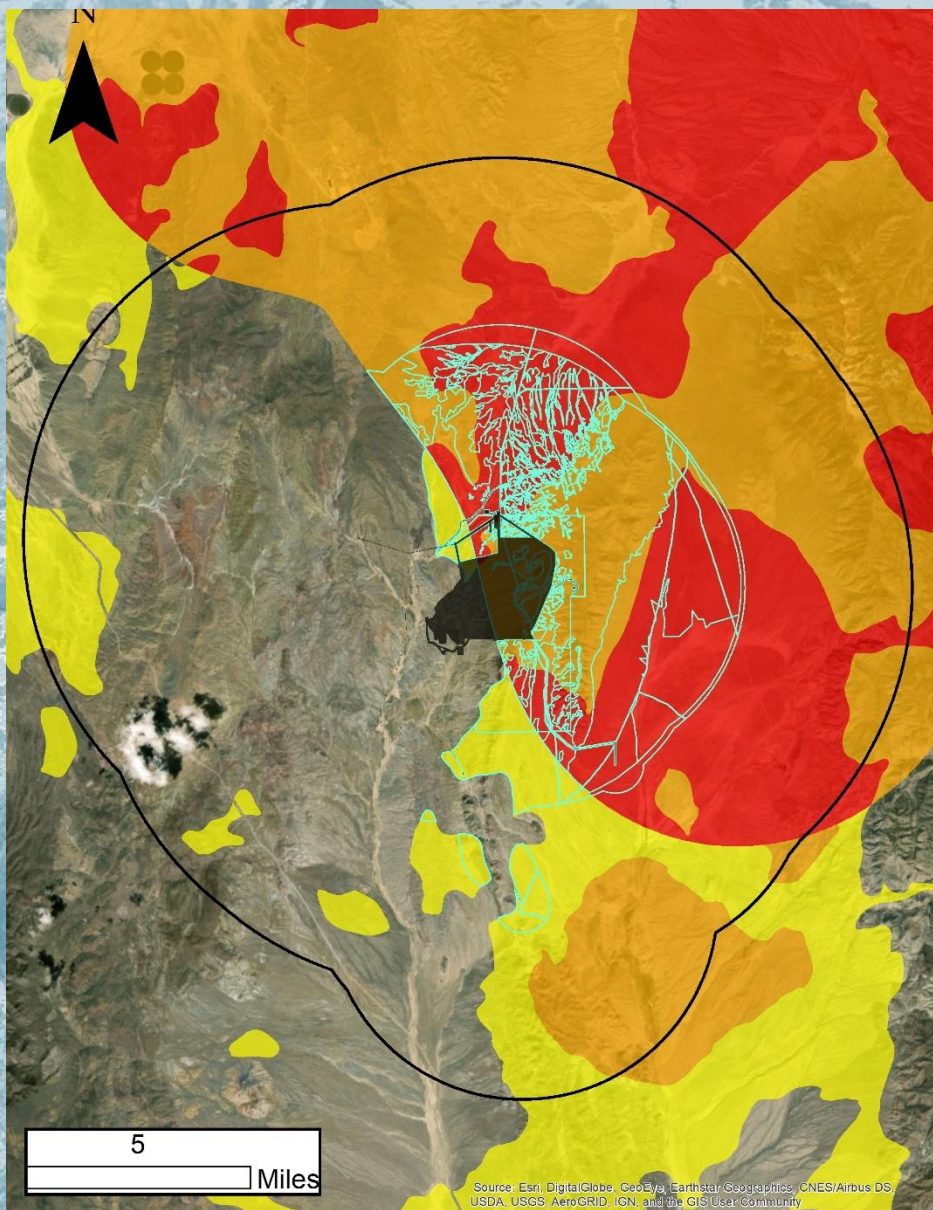


	Greater Phoenix Phase 1	Average Among Projects
Direct Impact Acres	513	1405
Indirect Impact Acres	27,998	43015
Cumulative Acres	34,571	44420
Debits	211	1815
Debits/Cumulative Disturbance Acres	0.007	0.029

Source: B.A. DigitalGlobe, USDA, USGS, AeroGRID, IGN, and the GIS User Community



Debit Project Variation – Gold Rock



Legend

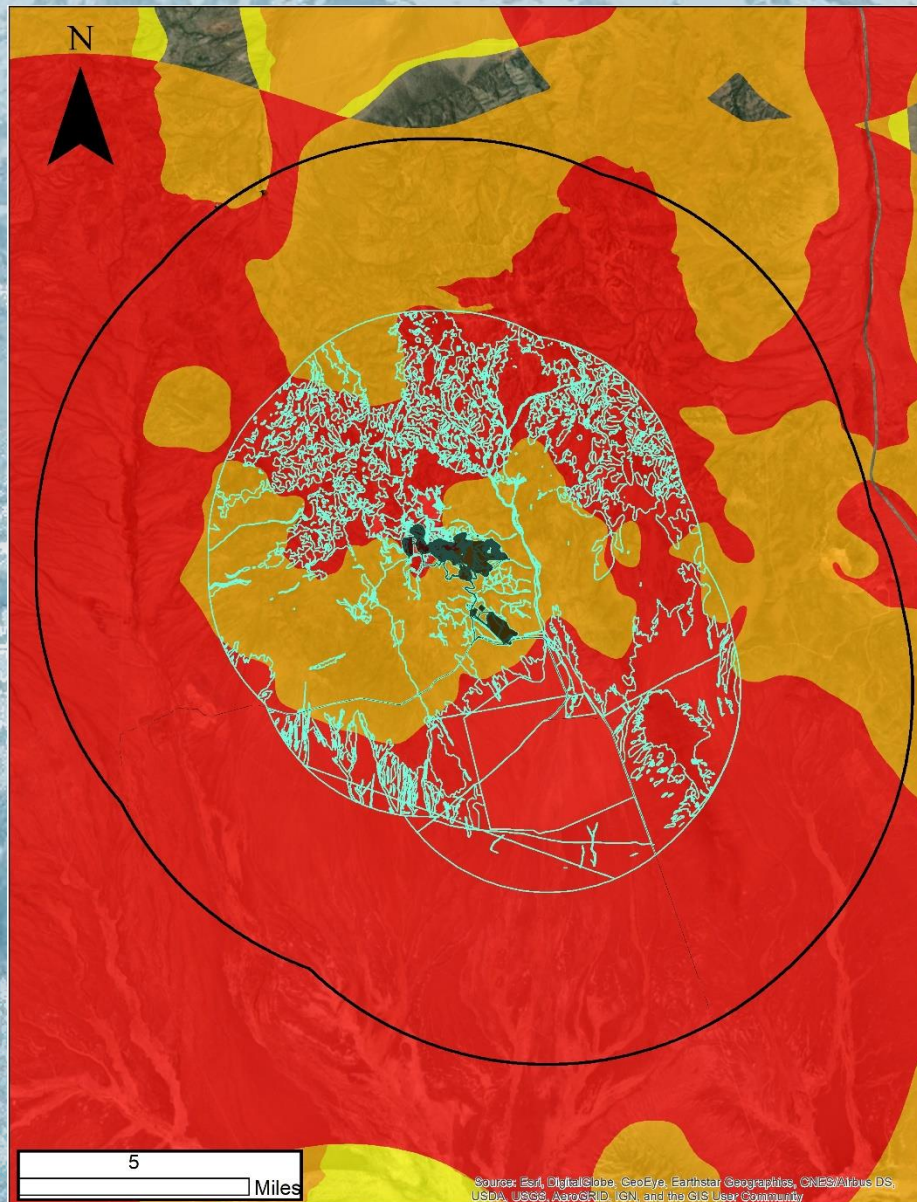
- Proposed_Surface_Disturbance
- Map_Units
- Analysis_Area_6000m
- PHMA
- GHMA
- OHMA

	Gold Rock	Average Among Projects
Direct Impact Acres	1,799	1405
Indirect Impact Acres	34,571	43015
Cumulative Acres	36,370	44420
Debits	2,985	1815
Debits/Cumulative Disturbance Acres	0.082	0.029

Source: Esri, DigitalGlobe, GeoEye, Earthstar Geographics, CNES/Airbus DS, USDA, USGS, AeroGRID, IGN, and the GIS User Community



Debit Project Variation – Gold Bar



	Gold Bar	Average Among Projects
Direct Impact Acres	662	1405
Indirect Impact Acres	67,678	43015
Cumulative Acres	68,340	44420
Debits	6,814	1815
Debits/Cumulative Disturbance Acres	0.100	0.029

Source: Esri, DigitalGlobe, GeoEye, Earthstar Geographics, CNES/Airbus DS, USDA, USGS, AeroGRID, IGN, and the GIS User Community